



Beaufort County Public Works
Stormwater Infrastructure
Project Summary

Project Summary: Wimbee Landing Road, Wimbee Creek Road
 Kinloch Road and Honeybee Island Road

Project #: 2010-216 Completed: Sep-10

Narrative Description of Project:
 Project improved 5,838 L.F. of drainage system. Bush hogged 1,235 L.F. of roadside ditch. Cleaned out 335 L.F. of outfall ditch and 5,503 L.F. of roadside ditch. Upsized (2) crossline pipes. Reinstalled (1) access pipe to correct elevation. Jetted (2) crossline pipes, (2) access pipes and (3) driveway pipes. Installed rip rap and hydroseeded for erosion control.

Material Cost, Rental Equipment Summary, and Labor

| Material | Unit | Cost/Unit | Qty | Cost |
|--|-------------|-----------|-------|--------------------|
| 18" RCP Pipe | linear feet | \$11.47 | 64.0 | \$734.08 |
| Rip Rap | ton | \$43.87 | 7.5 | \$327.27 |
| #57 Stone | ton | \$47.00 | 3.4 | \$160.27 |
| Filter Blanket Woven | sy | \$0.63 | 55.6 | \$35.00 |
| Silt Fence | sy | \$0.78 | 38.9 | \$30.33 |
| Turf Staple | each | \$0.03 | 60.0 | \$1.80 |
| 10-10-10 Fertilizer | bag | \$11.72 | 2.0 | \$23.44 |
| Hydromulch | bale | \$12.22 | 4.0 | \$48.88 |
| Hydrogel | cup | \$2.82 | 2.0 | \$5.64 |
| Hydromax Liquid Fertilizer | cup | \$2.54 | 2.0 | \$5.08 |
| Brown Top Millet Grass Seed | bag | \$21.40 | 2.0 | \$42.80 |
| Water | gallon | \$0.01 | 3,250 | \$32.50 |
| Pin Flag | each | \$0.06 | 46.0 | \$2.76 |
| Flagging Tape | roll | \$1.34 | 0.1 | \$0.16 |
| Excavator Rental | | | | \$1,468.88 |
| Gas | gallon | \$2.40 | 150.0 | \$360.00 |
| Diesel | gallon | \$2.70 | 889.1 | \$2,400.57 |
| Labor | hours | | 940.5 | \$20,572.62 |
| Indirect Labor, Services, and Supplies | | | | \$14,194.53 |
| Total Cost of Materials, Rental Equip., and Labor | | | | \$40,446.62 |

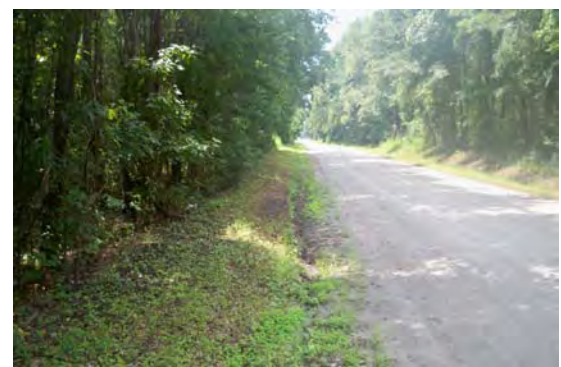
Note: Labor cost includes the employee's salary plus fringe benefits.

Equipment Cost

| Item | Asset | Cost/Hour | Hrs. | Cost |
|---------------------|-------|-----------|------|------------|
| JCB Urban Excavator | 23364 | \$31.45 | 45.0 | \$1,415.25 |

Site Photographs

Before



During



After



Wimbee Landing Road Project Summary Con't

Project #: 2010-216

Equipment Cost

| Item | Asset | Cost/Hour | Hrs. | Cost |
|-----------------------------|-------|-----------|-------|------------|
| JD Loader 444J | 23271 | \$29.75 | 3.0 | \$89.25 |
| Bobcat T300 | 22847 | \$20.10 | 31.0 | \$623.10 |
| Bobcat T320 | 23388 | \$21.00 | 4.0 | \$84.00 |
| Bush Hog | 23362 | \$29.88 | 5.0 | \$149.40 |
| Lowboy | 23118 | \$34.64 | 4.0 | \$138.56 |
| Vacuum truck | 22812 | \$22.16 | 12.0 | \$265.92 |
| Hydroseeder | 23474 | \$12.44 | 3.0 | \$37.32 |
| Vibrator Roller | 19994 | \$19.08 | 3.0 | \$57.24 |
| Dump Trucks | | \$13.31 | 231.5 | \$3,081.27 |
| Pickup Trucks | | \$4.12 | 256.5 | \$1,056.78 |
| Total Equipment Cost | | | | \$6,998.09 |

Cost/hour excludes fuel cost.

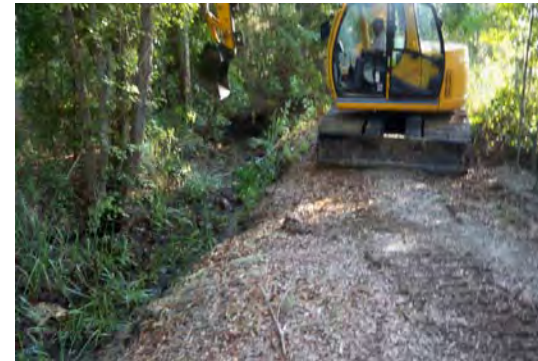
Total Cost: \$47,444.70

Site Photographs

Before

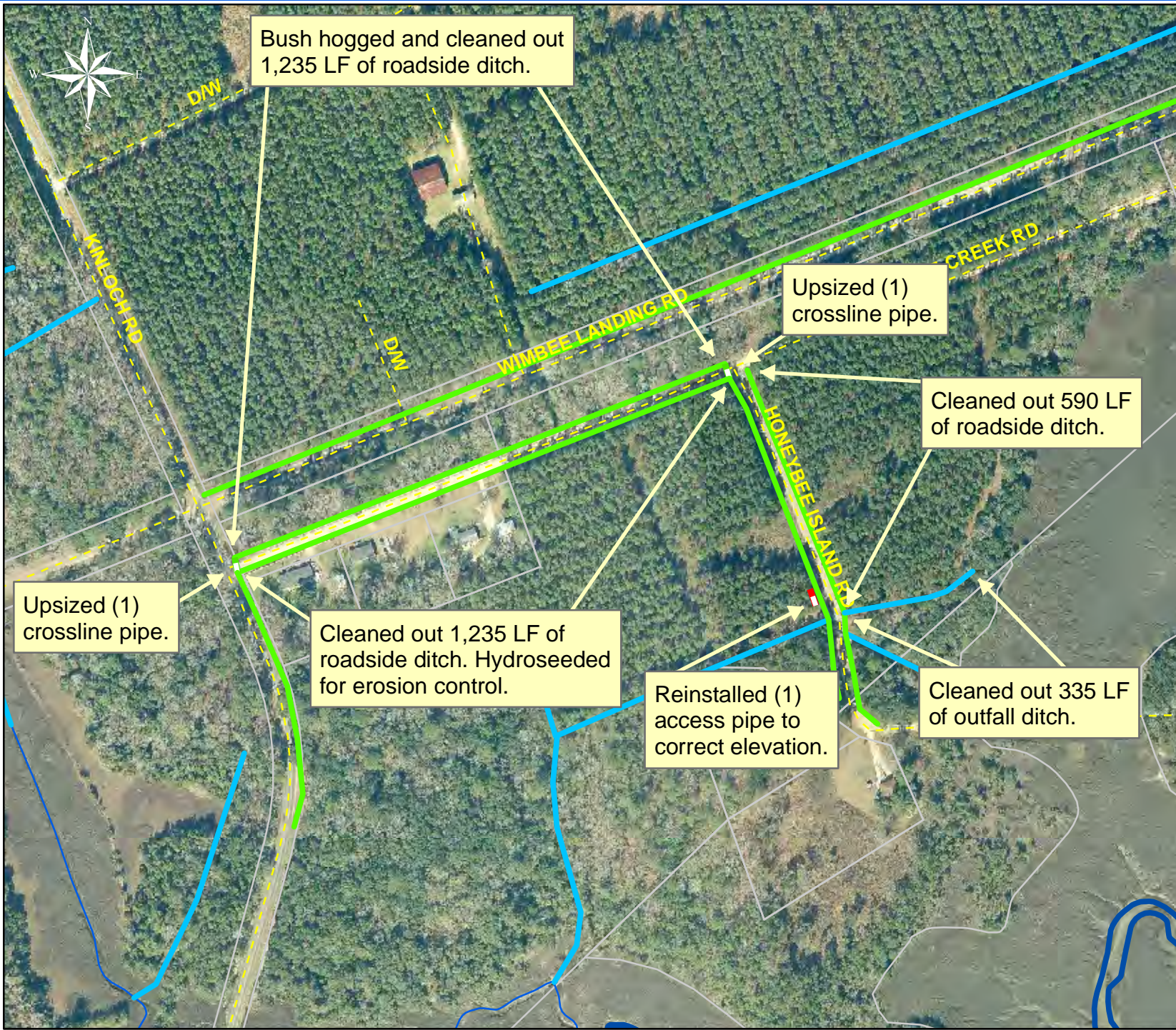


During



After





Project: Wimbee Landing Road, Wimbee Creek Road, Kinloch Road and Honeybee Island Road Map 1

Activity: Drainage Maintenance

Project #: 2010-216

Township: Sheldon

Completed: September 2010

| Legend | |
|----------------------|---------------|
| Drainage Type | |
| | River |
| | Stream |
| | Outfall |
| | Lateral |
| | Lateral Pipe |
| | Roadside |
| | Roadside Pipe |
| | Crossline |
| | D/W |
| | Access |
| | Piped |
| | Bleeder |
| | Parcels |

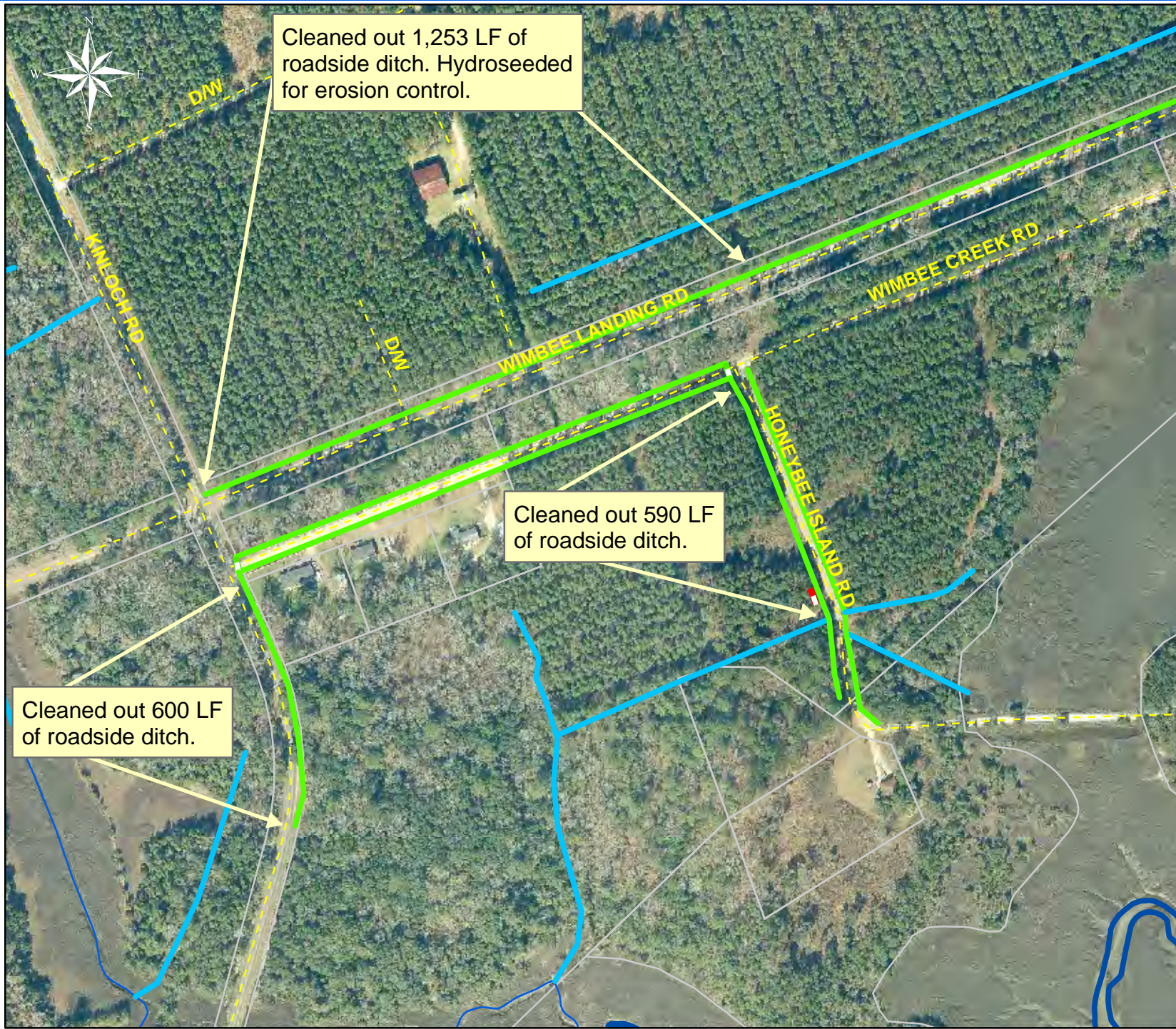


1 inch = 311 feet

Prepared By: BC Stormwater Management Utility

Date Print: 4/23/11

File: C:/sethdata/projects/projectmaps/Wimbee & Kinlock Rd 2010-216 Map1



Project: Wimbee Landing Road, Wimbee Creek Road, Kinloch Road and Honeybee Island Road Map 2

Activity: Drainage Maintenance

Project #: 2010-216

Township: Sheldon

Completed: September 2010

Legend

Drainage Type

- River
- Stream
- Outfall
- Lateral
- Lateral Pipe
- Roadside
- Roadside Pipe
- Crossline
- D/W
- Access
- Piped
- Bleeder
- Parcels



1 inch = 311 feet

Prepared By: BC Stormwater Management Utility
 Date Print: 4/23/11
 File: C:/sethdata/projects/projectmaps/Wimbee & Kinlock Rd 2010-216 Map2

**Project: Wimbee Landing Road
Map 3**

**Activity: Vacuum
Truck**

**Project #:
2010-216**

Township: Sheldon

**Completed:
August 2010**



Legend

Drainage Type

- River
- Stream
- Outfall
- Lateral
- Lateral Pipe
- Roadside
- Roadside Pipe
- Crossline
- D/W
- Access
- Piped
- Bleeder
- Parcels

0 75 150 300 450 600
Feet

1 inch = 243 feet

Prepared By: BC Stormwater Management Utility

Date Print: 4/29/11

File: C:/sethdata/projects/projectmaps/Vactruck/Wimbee Landing Rd 2010-216